



MICHEL VERSCHEURE TRANSPORT
WWW.VERSCHURE.BE



History

1930

Grandfather was already in the transport business in 1930, with horse and carriage, an activity which was being continued by father Frans Verscheure.

A FEW YEARS LATER

A first truck was bought and motorized transport started.

1966

In 1960 the first company was founded, in 1966 Michel Verscheure joined, we started our first activities in the intermodal transport less then 10 years later.

1973

We did our first intermodal transport to Italy. We switched from road to multimodal.

PRESENT

As recognized by our partners and clients, our company has grown to more than 200 swap bodies, mainly 45ft units.

In trying to improve and better serve our clients we have gathered a team of specialized

staff in multimodal transport. In the past years, considerable investments were made in renewing our tractor fleet, in Belgium as well as in our subsidiaries in Italy and Spain.

"MVT Green Logistics"

is clearly not a slogan, but a reality which is made come true by the daily efforts of our collaborators.



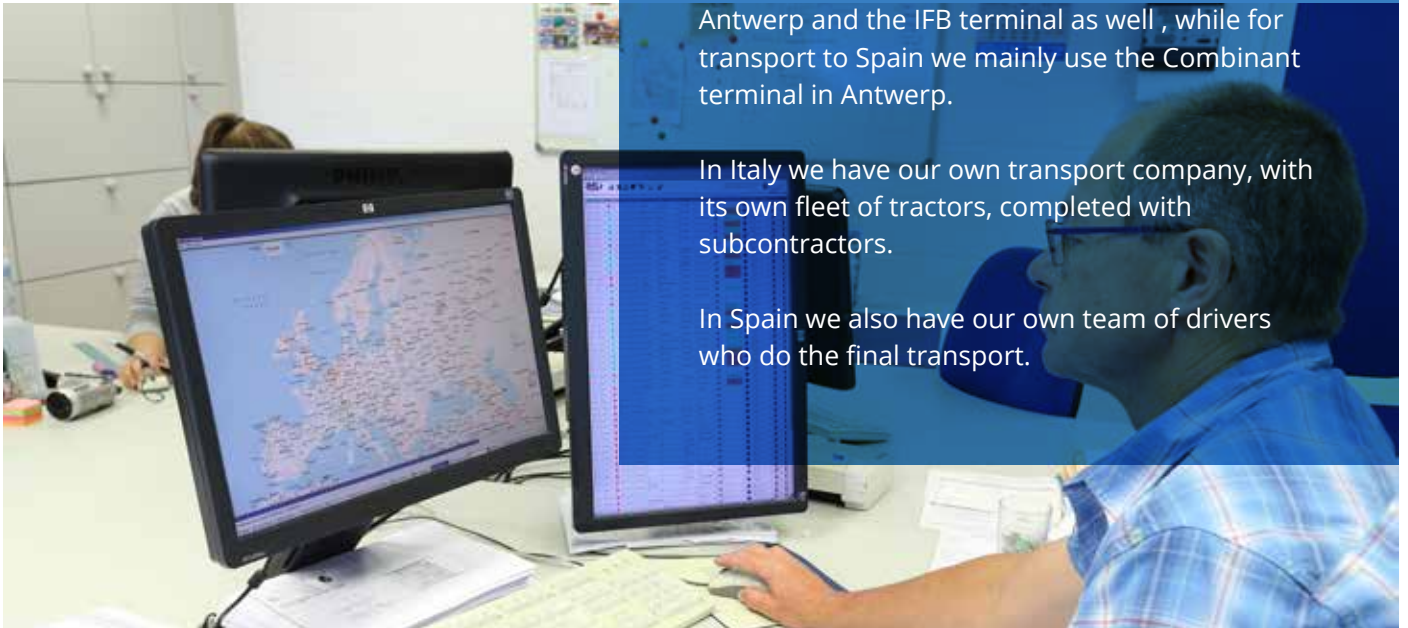
Countries

At Present we weekly organize more than 100 transports to Italy and vice versa, as well as more than 30 transports to and from Spain.

For Italy we mainly use the Hupac terminal in Antwerp and the IFB terminal as well , while for transport to Spain we mainly use the Combinant terminal in Antwerp.

In Italy we have our own transport company, with its own fleet of tractors, completed with subcontractors.

In Spain we also have our own team of drivers who do the final transport.



ENVIRONMENT

Our Intermodal transport is a fast, safe and environmental friendly mode of transport. More than 20 000 TEU every year. Our environmental friendly solutions: More than 14.000.000 km rail instead of road transport every year.

MULTIMODAL

Fast, reliable service, long term partnership with customers and suppliers.
Pro active communication, tracking & tracing of all our trucks and all units on the trains. Competitive pricing compared with road transport. Our speciality : 100% is with intermodal transport : road - rail - road.
Our specialized staff ships more than 12 000 units every year with the railway companies from Belgium to/from Italy and Spain.

QUALITY LABELS

Most of our swap bodies are constructed according to standard DIN EN 12642 Code XL.
We foresee to be a SQAS Assessed Company by the end of 2014.

Vision



Equipment



Own fleet with minimum Euronorm 5 – engine Euronorm 6 to be expected second half of 2014

45 FEET HIGHCUB CONTAINER



General view



Open backside

45 FEET SWAP BODY



General view



Open back side

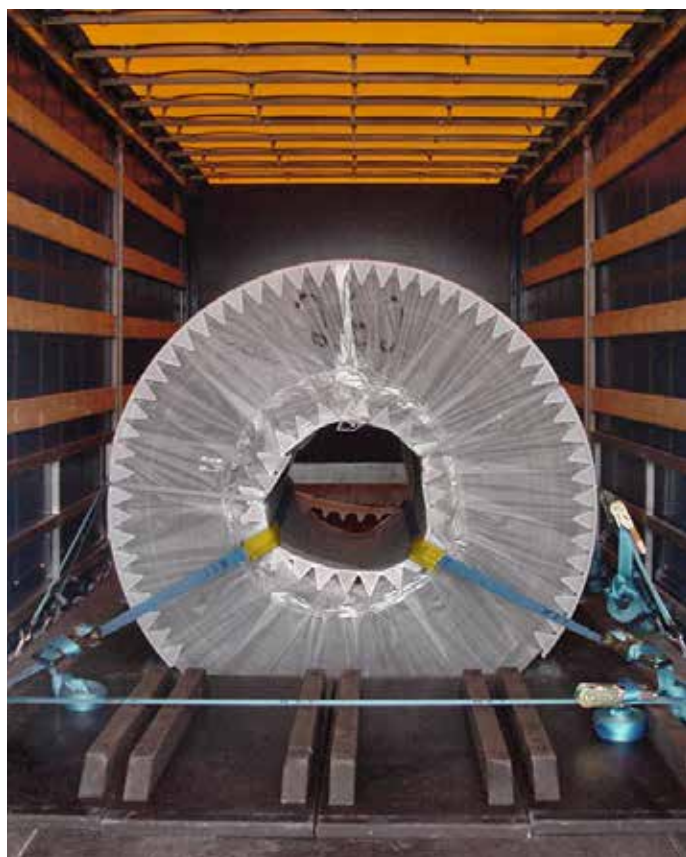


Back side with special fixed alu crossbar

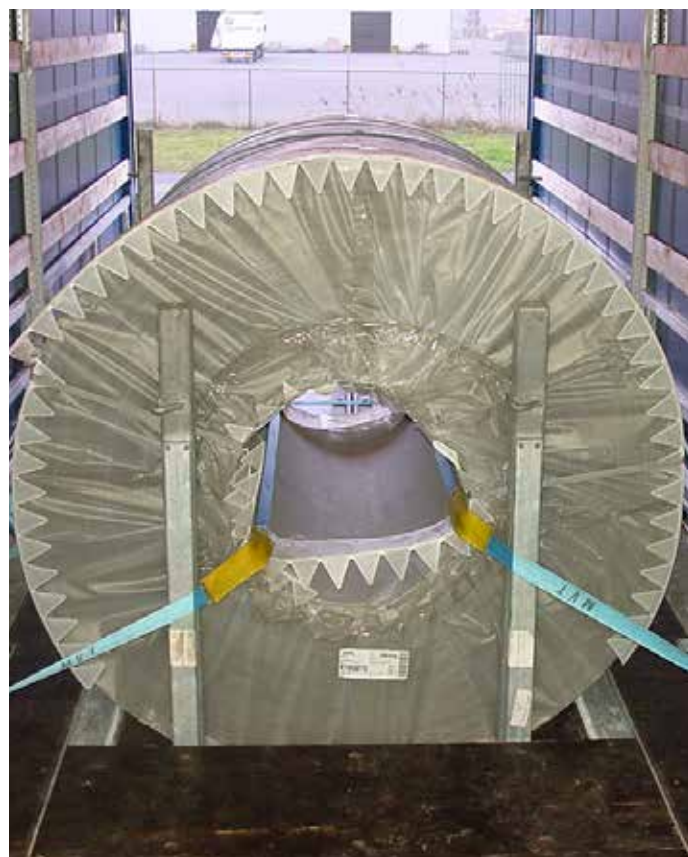
30 FEET SWAP BODY WITH COIL BIN



Full equipped coil trailers for safe intermodal transport.
Maximum load 28 tonnes



Inside look from backside



Inside look from frontside

Special equipments



Trailer equipped with a truck mounted forklift, capacity up to 3,5T and 4 way capability, to deliver your goods to the exact spot you desire even in rough terrain.

WAREHOUSING



Unloading truck in warehouse Rudderveerde



Own trucks to collect groupage tiles and general goods in Sassuolo (Modena - IT)

Head office

MVT BVBA **Michel Verscheure Transport**

Leitemolenstraat 4
8020 Ruddervoorde
België-Belgique-Belgio

Tel.: 0032 (0)50 28 80 80
Fax: 0032 (0)50 28 80 90
BE0406939447
planning@verscheure.be

Offices Italy with own warehouse

MVT ITALIA SRL

Via Carlo Panseri 118
28100 Novara

Tel.: 0039 0321 69 70 82
Fax.: 0039 0321 69 70 83
planningnovara@verscheure.be

MVT ITALIA SRL

Via Emilia Romagna 54/L
41049 Sassuolo (Modena)

Tel.: 0039 0536 90 54 70
Fax.: 0039 0536 90 55 10
planningsassuolo@verscheure.be

Correspondent Spain with own warehouse

MVT SPAIN

San Bartolomé 33
12200 Onda (Castellon)

Tel.: 0034 964 60 49 94
Fax.: 0034 964 60 55 27